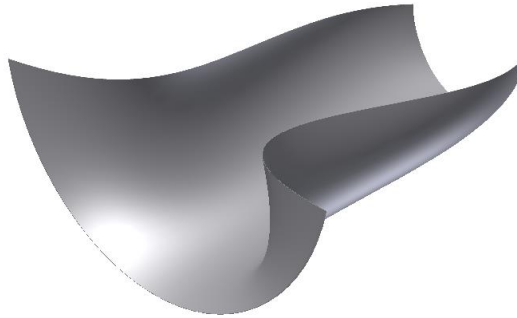




## Tutorial 1



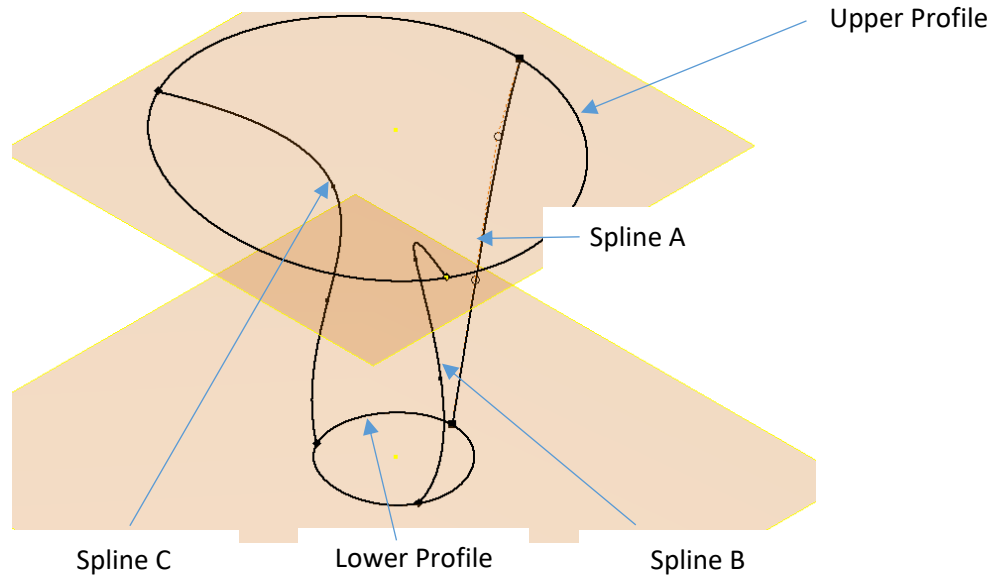
### Instructions:

- Model the complex shape shown in the illustration above based on the Coordinates listed in the tables below. (*Start with the lower profile on the xy plane*)
- Shell with a thickness of 1mm
- Split using the xz plane
- Save the completed model as Tutorial 1.ipt for handing in.

### Profiles - Spline Coordinates

Lower Profile		
X	Y	Z
0	100	0
90	-50	0
-90	-50	0
0	100	0

Upper Profile		
X	Y	Z
0	220	500
270	-180	500
-270	-150	500
0	220	500



2D SPLINE A		
X	Y	Z
0	100	0
0	140	200
0	180	400
0	220	500

3D SPLINE B		
X	Y	Z
90	-50	0
120	-40	200
115	-80	400
270	-180	500

3D SPLINE C		
X	Y	Z
-90	-50	0
-100	-20	200
-95	-55	365
-270	-150	500

**Note:** Use the coordinates shown in the tables only. Do **not** change the default material. The values in the video may be different